

THE AXE CONTINUES TO FALL

It seems that Bill Wadge may not be the only prof hitting the street in September. MathNEWS recently interviewed Wadge and three other profs, Don Jensen, Ed Wang and Syd Bulman-Fleming. Jensen is in AA&CS; the others are in pure math. "Our situation is different but what we have in common is that none of us has at this moment a job for next year, at Waterloo or elsewhere" said Dr. Bulman-Fleming.

Wang and Bulman-Fleming have been here for one year on postdocs; Jensen has been here two years on a postdoc and Wadge, two years on a definite term appointment. (Profs are hired by the university under several different types of contracts, ranging from tenure, most secure, down to the postdoc, the least secure). "We have all been denied permanent jobs" said Jensen, "though some of us may get another year of postdoc."

None of the four is exactly delighted with the situation, mainly because job prospects for Phd's are so bleak. Wang said that "last year I sent out 200 letters to universities and colleges and got one job offer - at Waterloo". The others verified that Wang's was not an exceptional case. To make matters worse, in applying for many non-university jobs, e.g. high-school teaching, a PhD is more likely to be a

liability than an asset. "Some employers" said Wadge "look at your educational background like it was a criminal record - 'aha, I see you've been convicted of M.A. and Ph.D!'". They explained that job prospects varied depending on the field, e.g. History is worse, Computer Science a little better, but that on the whole said Jensen, the situation is grim.

All are currently teaching undergrad courses; Wadge, 472B and two sections of 129B; Jensen, 229A; Wang, 319A, and Bulman-Fleming, 312B. "After you've been at a place for a while you make friends, get to know the students and it's hard just to pull up your roots and move on". "Besides" said Wadge, "it's not as if our services aren't required- teaching loads are actually going up. A lot of profs are doing three courses now instead of two" (see the earlier mathNEWS article on Wadge). The four agreed that money is a problem, at least at the departmental level. But Wadge remarked that "the university seems to be able to come up with the funds when it wants to. Like just recently the Faculty club got a 50-year loan for half a million dollars."

Bulman-Fleming, Jensen, Wang and Wadge may have some company: rumours are that not a few Waterloo profs are being un-hired, in various faculties throughout the university.

mathNEWS

a news weekly
published at the
University of Waterloo
Friday February 16, 1973

MATHEATRE

"Mathsoc is branching off into different realms of entertainment and is presently experimenting with different styles of films," Steve Treadwell, mathsoc president, recently informed mathNEWS. The math society has scheduled a series of free films to be shown in the next few weeks.

The premier showing takes place next Mon. Feb. 19 when a Laurel & Hardy comedy "From Soup to Nuts" and Stephen Leacock's "My Financial Career" are featured. The set of two will be repeated the following day. Three other films are also scheduled. The complete calendar follows:

Mon. Feb. 19 at 2:30 p.m. in M&C 2066 and

Tues. Feb. 20 at 10:30 a.m. in M&C 2066

1. "From Soup to Nuts" and

2. "My Financial Career"

Mon. Mar. 19 at 2:30 pm in M&C 2066 and

Tues. Mar. 20 at 10:30 a.m. in M&C 2066.

1. "Ski the Outer Limits" and

2. "The Pharmacist".

(2 NFB productions)

Thurs. Mar. 8 from 3:30 to 6:10 p.m. in 2066 and from 8:30 p.m. to 10:40 p.m. in 2065

1. "The Good the Bad & the Ugly."

FEDS FUDDLE

The federation fundled another week of pubs last week and must be reaching an all time low reputation for entertainment on campus.

On all three pubs the federation tried a new 'experiment' by selling booze tickets for the bar rather than allowing the student to pay directly at the bar. There seems no apparent reason for doing this except to cause hassles, and cause hassles it did. Not only did it confuse the the unsuspecting student but also meant he had to stand in line twice (once for tickets and again at the bar). To top it all off he was being ripped off: three beer were being sold for \$1.20 vs the normal \$1.10. When asked why the prices were up, the ticket sellers replied "It's ever since Telegdi got in.". When it was pointed out that this was an obvious slander as Telegdi doesn't get in until March 1st, they then mumbled on about it covering the 'ripcoff prices that they paid the bartenders'. From rumours circulating about Wednesday night's pub it seems that the biggest ripoff came from the people running the pub: one worker said that at least \$50 worth of beer tickets were given away free to 'friends' and 'helpers'.

Not to be outdone, the federation rocked on with what is now almost a tradition of catering to themselves. Both Wednesday and Thursday night pubs featured heavy rock groups that have low appeal on this campus; from the results of weekends run by societies it would seem that most students are in favour of good dancing music groups.

Friday night once again saw a blues concert (don't the feds ever get tired of blues?). Although the concert was good, the sound system was particularly bad. Major complaint from students about Friday night was that the concert was the only function that the federation was running. Many students felt that a pub should have been held as well.

Through no fault of the federation, Michael Lewis drew a good crowd. Here again the sound system seemed very bad but we can't expect everything to be perfect can we?

One of the many disappointments about last week was the lack of afternoon pubs. There were coffee houses most afternoons and evenings but let's face it most students don't get off on coffee and despite rumours to the contrary the whole campus doesn't smoke dope. So why didn't the federation run pubs in the afternoons, especially when these have been such a success this term?

One redeeming factor was at least last week was about what everyone expected from the federation. Keep up the good work.

sound off :

TELEGDI : UPHILL BATTLE

It seems there is a movement afoot to undermine Andrew Telegdi, newly elected Federation President before he even gets his foot off the ground. The present clique within the Federation apparently doesn't believe Telegdi's the man for the job, yet the record shows the Federation itself has done a poor job of running matters.

For example they booked a pub for this Saturday but failed to get a licence--or a group--which results in a wasted night for the students. And how about the fine job they've done of the concerts, blues concerts.

They under emphasize sandbox and keep playing politics, but it must be obvious now that it's sandbox the students want, as Telegdi's victory proves.

Thirty-three percent of Math turned out to elect Telegdi two to one, the highest voting turnout of any faculty. He didn't fair so well in the co-op vote. The candidates had a deadline for submitting their co-op campaign letters, which only Telegdi and Silverstein met, unfortunately for Telegdi. Somehow Roberts got hold of Telegdi's letter and decided to write a counter letter, an act which is unethical if not illegal. After much hasseling it was decided that neither letter would be sent out, which is unfair to Telegdi and possibly cost him the co-op vote.

Telegdi was also accused of raising the price on beer tickets in last weeks Federation Pubs--when he doesn't take office until March first. There's ever talk among the diehards of "stacking council" against him so he can't get anything accomplished.

It looks like it's going to be an uphill battle, but Telegdi does have one thing on his side that some people seem to have forgotten--student support

MATHSOC
ELECTIONS :
WHY DON'T
YOU RUN?

FORUM :

"Math WEEKEND II?"



Jerry Spwak

3 rd yr. Komputer

"I'm tickled" We'll see Jerry at the pubs for sure.



Sue Peachy

2 nd yr. Math

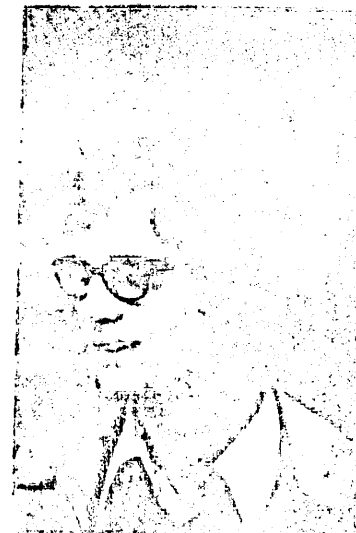
"I've been in Fass-but I'd love to go to some stuff if I can ever get caught up in my school work."



Trevor

Grad Math

"I like the pubs"



Bruce Near

3 rd yr. Stats

"I've heard rumors about Math Week-end II. I went in the car rally which was alot of fun, this time I'll have to go to all the pubs."

360/75 TO WATCH TV

Somewhere on the Olympian Heights of the Math and Computer Building, (the sixth floor for the non-literary types), a room is being furnished complete with video display units for use by undergraduates. The TV-like terminals will be connected indirectly to the 360/75 via a PDP/11.

The PDP/11 is a large "mini" computer, from the digital equipment corporation, capable of performing most of the functions of the full scale computers with a sacrifice in the amount of time required to execute an instruction.

The PDP/11 will act as a slave computer performing the time consuming terminal interface operations of storing, editing and formatting. The data is saved on disk and when the student is ready, the input file is transmitted to the 360/75 and the output is returned to the PDP/11 for scanning.

It is hoped that this new service will be available in the next few weeks.

This Week's Theorem

Three Navaho women sit side by side on the ground. The first woman, who is sitting on a goatskin has a son who weighs 140 lbs. The second woman who is sitting on a derrs skin has a son who weighs 160 lbs. The third woman, who weighs 300 lbs. is sitting on a hippopotamus skin. What famous geometric theorem does this symbolize?

Ans. The squaw on the hippopotamus is equal to the sons of the squaws on the other two hides.

math ETICS

Hockey...

REG MATH SURGES INTO FIRST PLACE IN WILD WIN

An 8-0 verdict over the Street Urchins independent team has propelled Reg. Math into undisputed possession of first place in League V competitive hockey action.

The win was the fourth straight for the defending champions and was literally a hard-fought triumph.

STREET URCHINS EMPLOY STREET GANG TACTICS

Street Urchins, comprised mainly of Warrior football players, proved to be a tough adversary due mainly to a complete lack of respect for both the rules and the officials. They displayed a completely incompetent brand of hockey and attempted to intimidate the Mathies with a succession of high-sticking, slashing, charging and cross-checking infractions most of which went undetected (?) by the referees. In fact, such an aggressive display on the football field last fall may have resulted in a far superior Varsity football squad. But it is typical of the members of Street Urchins that they show their strength in cowardly acts committed mostly when the Math players' backs were turned.

Basketball CO-OP MATH IN FIRST PLACE

Technical problems have caused several intramural basketball games to be postponed the last 2 weeks and Reg. Math has now been idle since Jan. 28. However, in the interim, surprising Co-op Math has taken over first place in League VI with three straight wins, the latest by 48-37 over Bio-recks. Co-op Math has now clinched a play-off berth because of a defaulted win this week and will face Arts in their final contest on Feb. 26.

Elsewhere, Math I dropped a 78-20 squeaker to Jocks who outweighed and had a great height advantage. Darrin Johns shot 8 points to lead Math I who trailed 28-5 at the half.

FUTURE GAMES

Basketball: Sun. Feb. 18, 7:30 p.m., Reg. Math vs Science I. Mon. Feb. 19, 7:30 p.m., Math I vs Arts and at 9:30 p.m., Reg. Math vs Peel County Plus.

There were several nasty incidents in the contest which was out of hand the moment the puck was dropped and two pseudo-fights developed. Pseudo-fights in the sense that Street Urchin players started the skirmishes with valliant acts of charging and cross-checking. Also the officials chose to award only minor penalties and thus spare Reg. Math the loss of two of their players.

BOB DENNEY RECORDS SHUT OUT

As far as the scoring went, Rob Madeley, Ken Chupa and John Wetmore shot two goals each while Dean Mucci and Bert Hesselink added singles. Pat Fallon and Brian Greatrix had two assists each and single went to Wetmore, Madeley, Ted Smandychn and Rod Tanaka. Bob Denney recorded the shut-out but his main duty was to avoid flying elbows and sticks rather than stop flying pucks.

With a 4-0 record Reg. Math end their regular season this week with a Sunday night tilt against Science at 10:00 p.m. and a cross-over contest with Village West on Monday at midnight. Both games are at Moses Springer.

Hockey: Sun. Feb. 18, 10:00 p.m., Reg. Math vs Science. Mon. Feb. 19, 12:00 midnight Reg. Math vs Vill I West. Thurs. Feb. 22 11:00 p.m., Math I vs Geology. (All games at Moses Springer).

REG MATH HOCKEY STATISTICS

SCORING	GP	G	A	PT
Rob Madeley	3	5	5	10
Ken Chupa	4	5	2	7
Dean Mucci	4	5	2	7
Pat Fallon	4	3	4	7
John Wetmore	4	3	3	6
Brian Greatrix	4	2	3	5

GOALKEEPING	GP	GA	Sho	GAPG
Bob Denney	3	3	1	1.00
Ray Benney	1	0	1	0.00
TOTAL	4	3	2	0.75

Games: 4; Goals for: 29; Goals Against: 3
(GP- Games Played; G- Goals; A- Assists; PT- Points; GA- Goals Against; Sho- Shut-Outs; GAPG- Goals Against Per Game)

Bowling UP YOUR ALLEY

On Sat. Feb. 10 at Waterloo Lanes, the first U of W Intramural Bowling Tournament was held. Although it was a university-wide competition, the event had a definite math flavour. The organizers of the tournament were Norm Macdonald and Mark Smith, two third year mathies (who also manage the U of W bowling club).

320 GAMES BOWLED

Sixteen teams were entered in the one-day affair with each team consisting of four bowlers (2 male, 2 female) for a total of 64 competitors. Each player bowled 5 games for a team total of 20 games. With a handicap system based on the first 2 games bowled by each participant, the final outcome of team scores was relatively low.

MEDIOCRE SCORES

The top 3 teams and their scores were: 1) Co-op Residence 3 (3961); 2) St. Jerome's 2 (3840) and 3) Renison 1 (3839). The best math team was a combination of fourth year mathies: Ed Zujko, Roger Côté, Joan McKellar and Jean Smith. Their team captured fourth place.

SOLVASON BREAKS 100 IN 5TH GAME

Bringing up the rear in the 16-team tournament was a team of third year stats mathies: Reg Kulperger, Bruce Near, Lynn Solvason and Mary Pappo (Kin/Rec) with a 3321 tally.

JOAN MCKELLAR STARS

Although the overall results were less than spectacular, Joan McKellar, a fourth year math student out-shone all other bowlers by posting the high single for the tournament at 324. As well, she set the 5-game high of 1068.

INCOME TAX & YOU

Although the following information will be of value to all students, it was designed primarily for students in the CO-OPERATIVE PROGRAMS.

GENERAL

Each student has the option of calculating his or her income tax on either the conventional "calendar year" basis, or on an "academic year" basis. Particularly for Co-operative Education students, the "academic year" method may result in a tax saving and a more even distribution of tax payable per annum.

All claims for tuition fee deductions must be supported by receipts. Documentation should include your fee statement signed at registration as well as receipts covering any amount outstanding at registration and paid at a later date by monies received from scholarships or OSAP.

BASIC REGULATIONS

1. A taxation year is the calendar year.
2. All income earned during a taxation year must be reported for the year in which it is received.
3. Tuition fees, providing they exceed \$25, may be claimed as a deduction. Unlike income, which must be declared on a calendar year basis, tuition fees may be claimed for any 12 month period provided that the period begins in the calendar year for which taxes are being paid, and provided that the fees have not been claimed previously. (Consult the diagram to determine the most advantageous methods of grouping academic and work terms).

CHANGES IN INCOME TAX REGULATIONS

1. Under the new tax legislation, the parent or guardian is allowed a maximum deduction of \$550, for wholly dependent children over 16 years of age. If the dependent's net income exceeds \$1050, that part in excess of \$1050 is subtracted from the \$550. That which remains is the allowable deduction for the parent or guardian for his wholly dependent children.
2. Moving Expenses: If a student goes away to school the cost of getting there the first time may be deductible from the student's income, if he/she attends school more than 25 miles from home and lives there. Vacation expenses to and from home are not allowed in this package. However, moving to take up a new job after school (this includes each co-op work term) falls within the deduction package. Coming home to visit does not.
3. Scholarships, fellowships and bursaries in excess of \$500 in any year are to be included in income.
4. Full time students are allowed a deduction of \$50 per month for each month of full time attendance in the year.
5. A deduction of 3% net income to a maximum of \$150 will be allowed as employment expense.

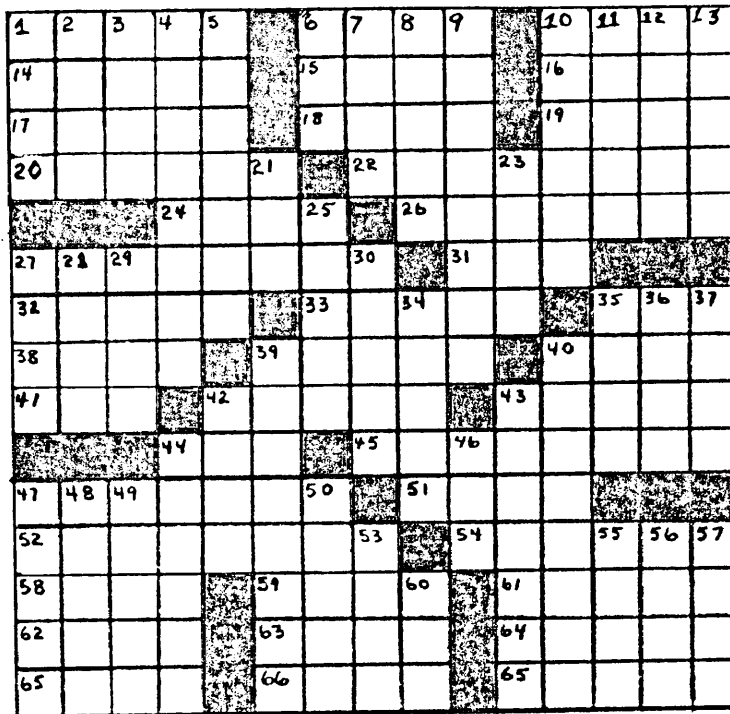
IN CONCLUSION

Obviously, not all individual problems are covered in the above. If problems do arise, contact the local income tax office. All members of that Department are available to discuss your tax problems with you whenever the need arises, FREE OF CHARGE.

1972	1973		1974		1975		1976		1977
F	W	S	F	W	S	F	W	S	F
1A	1B	2A	2B	3A	3B	4A	4B		
	2 ACADEMIC	2 ACADEMIC		1 A	2 A				
	1 WORK	2 WORK		1 W	2 W				

4 month stream:

1972	1973		1974		1975		1976		1977
F	W	S	F	W	S	F	W	S	F
1A	1B	2A	2B	3A	3B	4A	4B		
	2 A		1 A	2 A		1 A			
	2 W		1 W	2 W		1 W		1 A	



GRIDWORD

5. Renting agents
6. _____ code
7. Natural metals
8. Nasal openings
9. Women want it
10. Tried for
11. Star of "Alfie"
12. Shed _____
13. Canadian group
21. Skirt edge
23. Lancelot & Olivier
25. Underwater man
27. Gone
28. Zoo compartment
29. Co-ordinate references
30. Punctuation mark
34. Bowling areas
35. _____ 'n' span
36. Sassy
37. Inquires
39. Horton specialty
40. _____ woman
42. Snakes
43. Hard workers
44. Removes dirt
46. Alphabet letter
47. Divider in Fortran
48. Aunt (Fr.)
49. Perfume component
50. Immerse in liquid
53. Vienna, to a German
55. _____ bene
56. Applaud
57. Fish
60. Football scores

ACROSS

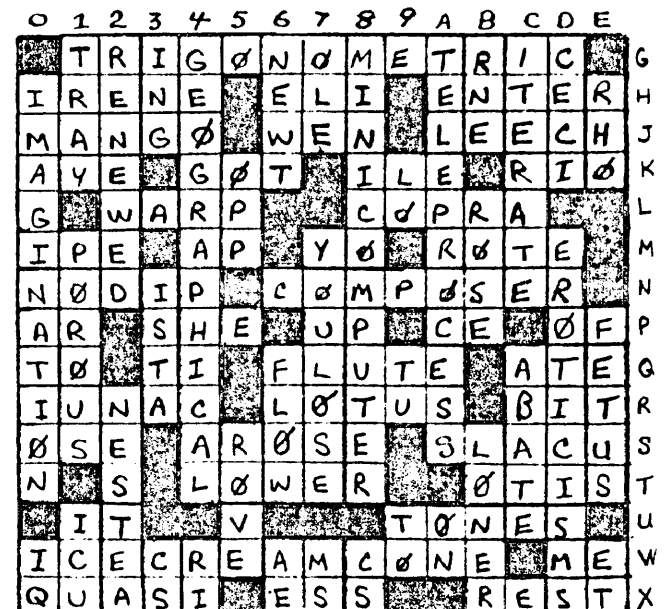
1. Node in a tree trunk
6. Area
10. Strikebreaker
14. Indian money
15. Country
16. Sharon _____
17. 3rd president
18. Country
19. Red river rebel
20. Hangup
22. Changing with the weather
24. Exigency
26. Pieces of wood.
27. Scholastic
31. Anger
32. Shines a car
33. Electrical units
35. Leisure spot
38. One who grows old
39. Wait
40. Gorillas
41. English supergroup
42. 5th element
43. Smug smile
44. Neck(fr.)
45. Ignores responsibility
47. Prison camps
51. Burn
52. TV program
54. To show
58. Association of National Theatre Artists
59. Night (Fr.)
61. School (Fr.)
62. Mikita or Musial
63. Employed
64. Pertaining to speed
65. Towel marking
66. Playing cards
67. Breaks suddenly

DOWN

1. _____ Zeppelin
2. Bare
3. _____ on the back
4. Souvenir

Thanks to Norm Macdonald for this week's GRIDWORD.

SOLUTION
TO
LAST
WEEK'S
GRIDWORD



Again this week mathNEWS offers a free T-shirt to the first person to bring a correct gridword solution to the mathsoc office.

LAST WEEK'S WINNERS

The winners of last week's GRIDWORD were Frank Mellor and Tom Matthews. When asked for a comment the winners said:

"I used my imagination as a composer of warped ideas and arose to the quasi challenge to my IO and after lowering the possible iterations to a restful tone, I entered into a lecherous state of ripe eroticisms and had an ice cream cone to dispell myself."

Far out. We'll be shoveling for weeks to get out from under all that.

This Week's Theorem

Three coins are tossed at once. What is the probability that all three come down alike -- that is to say, all three are either heads or tails?

(a) We can say with assurance that of the three coins tossed, two of them must come down alike -- both heads or both tails. What of the third coin? The probability that it is heads is $1/2$; that it is tails, also $1/2$. In either case the probability that it is the same as the other two is $1/2$. Consequently the probability that all three are alike is $1/2$.

(b) But now suppose we use an argument involving the multiplicative and additive principles descussed in Grade 13. For the moment let us fix our attention on heads. The probability that the first coin is heads is $1/2$; that the second is heads is $(1/2)(1/2)$ or $1/4$; that the third is heads is $(1/2)(1/2)(1/2)$ or $1/8$. In exactly the same way, the probability that all three are tails is $1/8$. Therefore, the probability that all three are alike (either heads or tails) is $(1/8)+(1/8)=1/4$.

Which result are we to accept, $1/2$ or $1/4$?

the Water Melon Caully Flower Dough

This is part 3 (of 9)
of an inspirational
novel by Gerhardt van
Schplümpftk.

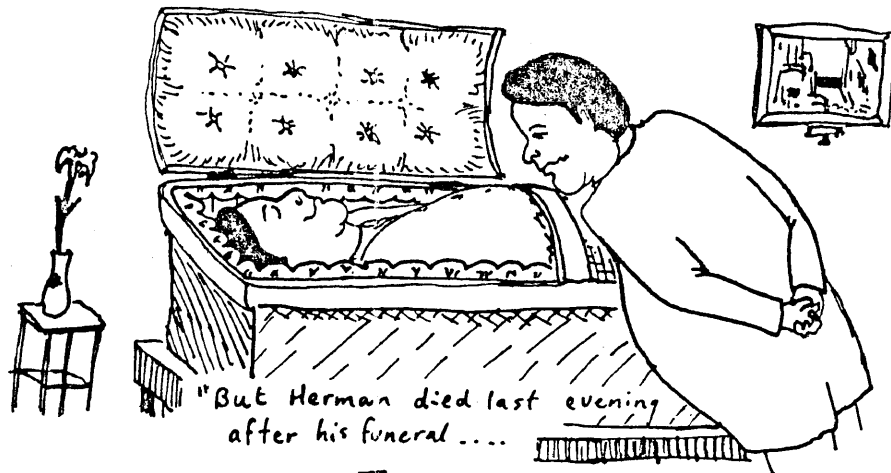
-Chapter 3-

I like tarts and Gauss. Gauss, who liveth in her eternally digested pieces of eight, sort of warm juicy bubbly nose; he stopped. Start talking your very long tongue and very long tongue and stop talking unless I stop him now. Twas the two fisted grebble started to fight. Greek.

"Contrariwise, I will almost sort it alot circularily, however, I blew it," Herman who told whom and exclaimed Zelda George Zabrinky. Herman eats Zelda's oldest appendage with mustard and relish with relish and her mustard. But hang it somewhere up her umbrella. Unless harrassed by the umbrella, he used to open the butter tart with out relish or Herman's mustard which she gobbled and greedily devoured. If he warily proved it, he then would have eaten tarts or tits.

Gauss was alive. But Herman died last evening after his funeral because it was killed when rain decided to fall. Somewhere over the rain bow somewhere over the sky I balled, billed and bullshat under her cloud. At four o'clock she entered into his apartment which unfortunately wasn't clean enough for her very hungry tastes except never on her Sundays; unless I decided to buck. Marvin the Gardens when taken, likes to have decided that he decides that he did decide.

"Until the yesterday," he biffed out, "I slowly arose with the crowd of fearful tarts. Sometimes I do it." Zelda was Herman's best nicety.



the phantom reports....

APL has EIGHTEEN terminals available in M&C 3022 (count them) ! Right? Well --- M&C 3022 may have 18 terminals lying around BUT two have NEVER been connected. It would seem they are being kept as reserves, if some other terminal gives up the ghost entirely, to the point where it must be hauled away in a trash can, one of the unconnected terminals miraculously takes its place! This is not to say that there are no thoroughly busted terminals lying around, it seems at least one is required as a status symbol, but at least the others are usable (sort of), if you don't mind using a terminal that forgets to send every other backspace (APL uses overstruck characters for almost half its primitive operators), or loses tabstops (APL uses tabs to speed up output), or has keys that have to be pried up every time they're used, (or fly off on the recoil) or the typeball of which jams at an odd angle, there is even a terminal (back right-hand corner) which decides to sign you off after about an hour and won't let you back on until you let it have its beauty sleep. But despite all, you can reasonably expect to have as many as ten or eleven terminals running fairly well on a good day. Of course there's always the question of how often you can get a "good day" running on the 44.

AH*WELL

Now, since it seems appropriate, and we have to waste space somehow here is a quiz to test your computer like powers of deduction and self-destruction:

- 1) There are 5 computer terminals sitting in a row, each is a different colour and in a different state of disrepair. They are connected to different computers, and are each frustrating members of different departments, who each have their own bottle of pacifier.
- 2) The statistician is trying to use the maroon coloured terminal.
- 3) The computer freak is consoling himself with a bottle of scotch.
- 4) A PDP-11 is connected to the screaming yellow terminal.
- 5) The applied mathematician is connected to a Honeywell 6070.
- 6) The screaming yellow terminal is to the immediate right of the shocking pink terminal.
- 7) The mathie with the jammed keyboard is guzzling a pint of beer.
- 8) The terminal with the wrong typeball is violet.
- 9) The terminal in the centre is connected to a IBM 360.
- 10) The PURE mathie is on the terminal at the far left.
- 11) The clod without any paper is next to the fellow with the banana wine.

- 12) The terminal with the wrong typeball is next the soda pop drinker.
- 13) The terminal which is working is not connected to any computer.
- 14) The fellow from combinatorics and optimization doesn't have any keys on his keyboard.
- 15) The PURE mathie is next to the fluorescent green terminal.

So who got the IBM 1620? And who is tripping out on lemonade?

A free T-shirt to the first correct solution. Apply at the Mathsoc Office.

Anyone inane enough to wish to contact the phantom can do so through 555 MAIL (This cryptic and uninformative byte of info was brought to you care of nobody in particular).



Not many people seem to be aware that the sculpture outside the Math building is an actual model of a prehistoric dinosaur egg. The sculpture is twenty times the actual size. The egg, currently being displayed at the Royal Ontario Museum, was found while workmen were excavating for the Math building. Scientists theorised that it was pushed down from the far north by the glaciers. There is also evidence to show that the egg was created when what is now known as the north pole had a more moderate climate.

CLASSIFIED

HOUSING: 2 bedroom semi-furnished apt. available for summer term, sauna, pool, party room, indoor parking for bicycles, cable TV, laundry, \$170 per month (negotiable, a little), on University Ave., great hitchhiking. Phone 884-5280.

NEED A JOB? Circle K has a part-time job list on their door, M&C 3040 (right beside mathsoc).

WANTED: Part time typists, willing to learn Honeywell edit system, good working conditions, 12 hr week, night shift only, minimal pay. Contact mathNEWS via mathsoc office, M&C 3038.

FOR SALE: 1966 V.W., 89,000 miles, asking \$50.00 or best offer. Call Pat at 884-8062.

TO SUBLET: For summer, 3 bedroom townhouse, Lakeshore Village. Phone 884-0312, Mike or Harry.

TO SUBLET: 2 bedroom apt., partially furnished, for May 1 to Aug. 31, at Bloor and Spadina, Toronto. Call (Waterloo) 745-8776 or (Toronto) 967-5720.

FOR SALE: One goldadidas sweat suit, will fit anyone approx. 5'6" to 5'8", is only 3 months old. Phone 743-7145 and ask for Stephen anytime after 6 p.m.

CONG Rimmers of the world unite Membership meeting Campus Centre 1:00 am Tues. Feb. 20.

LATIN nicknames at reasonable prices. See Mike or Gary in S4, VI.

ARE YOU tired of living? Phone SUICIDES ANONYMOUS for helpful hints on achieving a tasteful death. Phone 878-999.

QUOTATIONS received telepathically, our choice of author, send 15¢ to: MN,GS,DM,KL,JI Inc., S4, 2nd Floor Lounge, VI.

MATHROOM
Problems? Hassles?
Come and Talk
with us
M&C 3023

THANKS to "Crazy Steve's Mail Forwarding Service", and hi to Yodar and the Barrie Place Gang. Love, Marg.

GAUSS LIVES

WANTED: One ad.

HERMAN died last night. Those interested in attending funeral please phone 2324, ask for Zelda.

FAMOUS quotations sent telepathically, send 10¢, choice of author, SA-214, Village 2.

Special thanx to Mark Sheilds who was so anxious to read this week's installment of the inspirational WaterMelonETC. that he volunteered to type it up !!

COMING SOON :

"GAUSS LIVES"
T-SHIRTS

and

"GAUSS LIVES"
PUB

BRENDER OF
TUCSON

Professor A. Brender of the Department of Mathematics, University of Arizona (Tucson) will present a seminar in Differential Geometry and related topics. His talk, "Complex Structures on Real Spaces" will be delivered in M&C 5158 at 10:30a.m. on Thursday, February 22.

MATH SOCIETY ELECTIONS

Nominations officially opened Thursday, Feb. 15 for 17 positions within the math society. Closing date for nominations is Feb. 27. The following positions are available:

Executive: President
Vice-President

The term of office shall be twelve calendar months beginning upon elections.

Regular Representatives:

- 3 Second year reps; people currently in first year
- 3 Third year reps; people currently in second year
- 3 Fourth year reps; people currently in third year and 3B CO-OP.

The term of office for representatives of the regular students shall be twelve calendar months beginning upon election.

CO-OP Representatives:

- 2 - 2A Reps; people currently in 1B

The term of office for representatives of the co-operative students shall be sixteen calendar months beginning upon election.

By-Election

- 2 - 2B CO-OP Reps; people currently in 2A CO-OP
- 2 - 3B CO-OP Reps; people currently in 3A CO-OP

The term of office shall be eight calendar months beginning upon election.

Note that the closing date for nominations is Tuesday, Feb. 27 with election day to be Mar. 7.

Nomination forms and further information are available in M&C 3038.

MATH WINTER WEEKEND II

Wednesday, February 21
12 Noon- Afternoon Pub
Campus Centre 'Whiplash'

Thursday, February 22
12 Noon- Afternoon Pub
Campus Centre 'Whiplash'

8:30 PM- Evening Pub
Food Services
PERCY AND THE TEARDROPS

Friday, February 23
12 Noon- Afternoon Pub
Campus Centre 'Whiplash'

8:30 PM- Evening Pub
Food Services
Advance Tickets Only,
Available At Math Soc
JASONJASON

Saturday, February 24
8:30 PM- Evening Pub
Food Services
YUKON

Sunday, February 25
2:00 PM- Toboggan Races
Kaufman Flats
Transportation Provided
From Math Parking Lot
To Kaufman Flats
Prizes And Trophies

Wednesday, February 28
Cross Country Skiing
Formosa Spring Brewery,
Barrie, Ontario
All Equipment Supplied

mathNEWS - financed by but independent of Mathsoc
it's been an unreal night... would you believe that we lost an important article and figured that it must have been thrown out with the garbage - so off we trekked outside at the back of the math building looking through mounds of garbage and piles of garbage bags; and now would you believe that we found it... but in our joy we got a few things mixed up and when we went to pick up our article it was missing again... that's right, we went back to the garbage and sifted through it again and sure enough, there it was... and there were we knee-deep in garbage at 6 in the morning... and after reading the article we now figure it should have stayed in the garbage... you might notice that the print has been reduced this week - we're trying different methods of producing this paper(?) cheaply... if you're interested in helping with this rag, we get it all together tuesday nights (all night) in mc 3011... tonight we were, at least we think we were (or were we?): lynne solvasor (howcomeyouquitearly?), dennis mullin, hans rempel, george betowski, john peebles, randall maddougall, steve treadwell and various visitors... see you all (yawn) next week (snore)...

why don't YOU come out and help sometime????