

CO-OP MONKEY SUIT DAYS

BEGIN NEXT WEEK

"There shouldn't be any placement problems this term, and we are certainly in a lot better position than we were last year at this time." This welcome bit of assurance comes from A.R. Dunnet of the Department of Co-Ordination as he referred to the overall math co-op job situation for the summer work term. Although Co-Ordination is still 30 jobs short of the number required, Dunnet points out that "for the last three placement sessions we have had more positions than students." He expects a repeat of this surplus as he adds that job offers are still arriving daily.

The co-op program itself is on the upswing. Dunnet points out the fact that, this year alone, there was a very appreciable rise in the number of first year students entering the co-op program. In fact, the total number of students in co-op math rose by more than 100 students in the 1972-73 school year over the number enrolled in 1971-72. Compare this with the number of regular students which remained relatively unchanged over the same period. This rise in popularity is especially

(continued on next page)

math NEWS

a news weekly
published at the
University of Waterloo

Thursday February 8, 1973.

MATH WINTER WEEKEND II

It is rumored that a special guest may be showing up for Winter Week-end II-----old man WINTER! (he sends his regrets about last time).

Winter Weekend II will be starting off with three afternoon pubs in the Campus Centre which will be held on Feb 21, 22, 23 (Wednesday, Thursday, Friday).

The Thursday evening pub in Food Services will feature a group well-known in western Canada currently touring Ontario, 'Percy and the Teardrops'.

On Friday one of the current best groups in Southern Ontario will be at Food Services. JASON has been such a success that they have been held over at several nightclubs in Hamilton and Toronto and continue

to pack dance halls. Well known for good dancing music, they're a group worth seeing. (note: tickets in advance only for this pub. See Mathsoc.)

Saturday night winds up the pubs with YUKON, again in Food Services.

ADVANCE TICKET POLICY

In response to many complaints from Mathies that they could not get into their own pubs on Math Weekend there is a new advance ticket policy.

For all Mathsoc pubs, Mathies will be able to get their tickets in advance at Mathsoc. This means that Mathies will no longer have to line up at their pubs and will be guaranteed entry.

noticeable in the Chartered-Accountancy Co-Op Program in which the number of students involved rose from 46 to 106.

C.A. UPSWING

J. Cusitar, under whom the C.A. Program falls, attributes this sharp increase to the fact that he believes that "business presents the best growth potential". Overall, figures show that there are now more than 1000 students in the Co-Op Math Program as compared to approximately 1400 regular undergrad mathies.

160 TO PLACE

For the upcoming work term there are about 160 mathies up for placement. Of these, between 110 and 120 are first year students who are vying for their first co-op jobs. The remaining 40 or 50 students are upper year co-ops who want to change employers. All other co-op students not included in the 160 will be returning to jobs of past work terms. As Mr. Dunnet points out, co-op students tend to stick with an employer. In fact, students are obligated to remain with an employer for at least 2 work terms and it is expected that their jobs will allow them to build on their experience.

So, the overall co-op job situation appears bright.

BY THE WAY

By the way, shirt-and-tie days for co-ops begin on Monday, Feb 12 and continue for 2 weeks.

LIBRARY TOURS

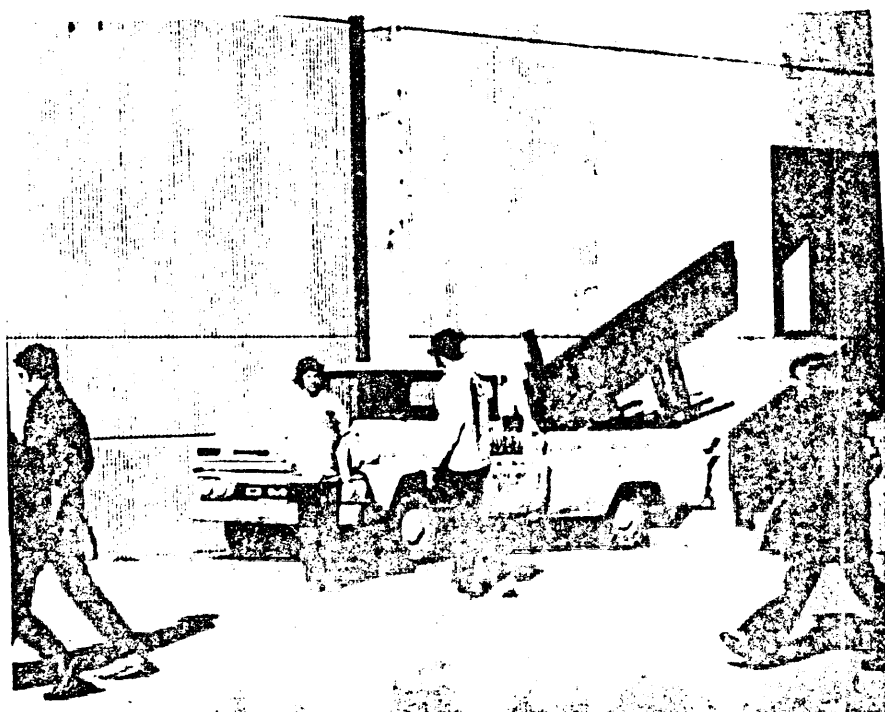
On Thursdays of this month the EMS Library is offering get-acquainted tours. Anyone wishing to have an informal introduction to library use, should meet at the reference desk on Feb. 8, 22, or 29. Tours will be conducted at 9:30 and 10:30 in the morning and at 2:30 and 3:30 in the afternoon.

FREE SERVICE

It's a little known fact that inter-campus mail is absolutely free.

This service is provided for all mail placed in the specially marked "on campus mail" mailboxes. "On campus" includes the Villages and Lutheran as well as the regular campus.

One of these boxes is located in the Math Bldg. Library. So if you're too lazy to walk or phone --- write!



Wondering about all the moving going on? There's a new undergrad computer lab, complete with CRT's, under construction on the sixth floor. Here, the terminal supports are being delivered. More info next week.

sound off :

STUDENT KOPSOUT

Soon we could be following the way of some other universities and have our own student Kops.

In an apparent attempt to save money, the federation could end up hiring student bouncers at pubs instead of Kampus Kops. The reasoning, of course financial, goes like this: it costs \$7.50 per hour per Kampus Kop at each pub - that's about \$45 for an afternoon pub and about \$75 for an evening pub. Students, on the other hand, could be hired for, say, \$2.50 an hour and costs are cut to a third.

The federation which seems to consistently lose money on pubs is adamant about making them break even. The hiring of students as Kops will cut these losses. It is interesting to note that other organizations such as Mathsoc and engsoc claim that with good advertising and music that appeals to the masses you can always make money.

The question here though goes beyond finances even if we are to believe the federation's story. Universities such as Western and Queens already have student police forces and it's questionable whether they're an improvement over Kampus Kops (ask someone who has been to a football game policed by students).

There are a few points that should be mentioned first:

1) A Kampus Kop is a recognized policing force and can often appear to have more authority: a rowdy student is more likely to listen to a Kampus Kop than to another student.

2) Inevitably, as they get at Western and other universities, there will be the power trippers applying for the job who are over eager to demonstrate their authority and who turn out to be far worse than Kampus Kops.

3) As we appear to have good relationships with Kampus Kops and as it is possible to run profitable pubs with them, why not continue to use Kampus Kops?

4) If at any time things get so rowdy that Waterloo Kops have to be brought in, don't you think that a Kampus Kops version of what happened would be accepted more readily than a student Kop's?

For the sake of a few dollars, which the federation could save anyway if it ran the pubs properly, it hardly seems worth stooping to the point where we're pitting students against students.

RENÉ'S BASH

Another Descartes Evening is being planned for recipients of Descartes awards on the 19th of February.

The programme will start at 8pm in MC2066 with Professor P.J. O'Halloran as guest speaker. The topic will be "The First Stage in a Problem of Roster Scheduling". If you are planning to attend, notify Mrs. Murison, MC5105, Extension 2248 by February 15.

THIS WEEK'S THEOREM

PROVE: $-1 = +1$

PROOF:

$$\sqrt{-1} = \sqrt{-1}$$

$$\sqrt{\frac{1}{-1}} = \sqrt{\frac{-1}{1}}$$

$$\frac{\sqrt{1}}{\sqrt{-1}} = \frac{\sqrt{-1}}{\sqrt{1}}$$

$$\sqrt{1} \cdot \sqrt{1} = \sqrt{-1} \cdot \sqrt{-1}$$

$$\underline{\underline{1 = -1}}$$

the Water Melon Caully Flower Dough

This is part 2 (of 9) of
an inspirational novel by
Gerhardt van Schollinsoth
-Chapter 2-

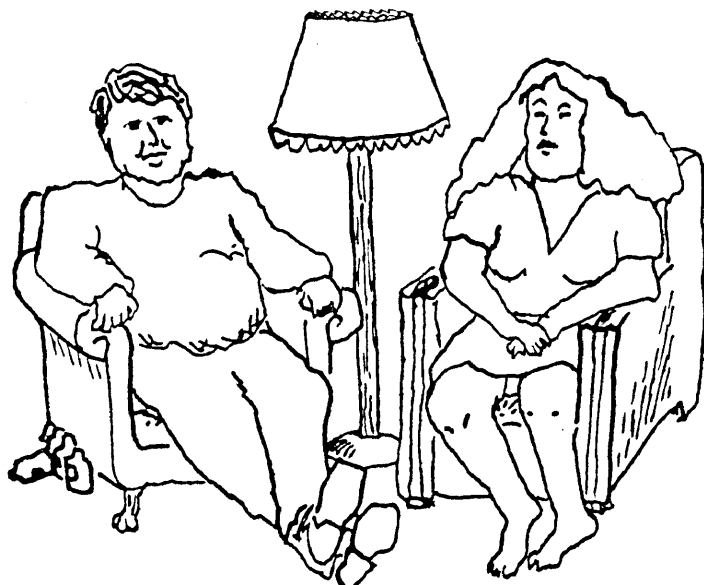
bull shit is derman's favourite kind of tart. However, she did violently attack the bull. Mary, our notable physician and pertart, decided to attempt such perverted acts with relish and mustard on derman's lobotomized wiener which was foot-long and also juicy. Nevertheless, it was eructing violently.

The other posttart, pretart and nontart didn't. But the hypertart. Much ado about it. Was it about ado or about adon't or about adidn't? Sometimes Zelda did and George's governor, who didn't, did.

Foecundae aren't really very interesting to bed with unless they don't have their beer.

"Beer!" I mellowly ejected towards her body.

"What?" she fulfilledly exclaimed.



"BEER" I MELLOWLY EJECTED TOWARDS HER BODY.
"WHAT?" SHE FULFILLEDLY EXCLAIMED.

"Beer, please," he burped out side his body internal or perverted his own mother who loved it with deep relish and mustard. Meanwhile back at the ranch, Trigger was molesting Roy and Dale, who were enjoying it with relish, ketchup and mustard. In my fondest tart, fondling her luscious and juicy attributes, was my delicate jam filled jar enclosing relish and mustard.

"Mother, what big red glands you have!" Johnny burbled.

"All most enough to satisfy any big boy who is hungry," she rollingly farkled while the other parts of her body twitched ecstatically. Also, in her cavernous mouth was three hot and little dogs. She wanted to put relish on them, but they didn't want anything to do or say with a problem like her. However, despite numerous people and/or animals, she groped for Johnny's big, hot, juicy and throbbing toe with relish and mustard. Soon Zelda jumped into the pit with sheer devastating nakedness, with elephants' toes encircling her enormous endocrine glands.

"Chests are very nice, especially if you are older or younger or inbetween and they are large er for comfort and delight and dedark," he said.

TOPOI

This Saturday, Feb 10, a Mathematical Logic Day will be held here at U of W. The featured guest will be A. Mostowski (Warsaw) who will speak on the theme "Set theory vs second order arithmetic." Also a special talk will be given by P. Freyd from the University of Pennsylvania on "Intuitionism vs topoi". A number of other speakers are to attend.

All talks will be scheduled between 10.30 a.m. and 5.00 p.m. on the fifth floor of the Math & Computer Building.

math VÉTICS

Hockey: Math mauls Arts ...

CHUPA CONNECTS FOR HAT TRICK

Ken Chupa exploded for three goals and one assist while Pat Fallon scored twice and set up two-others as Reg. Math mauled Arts 8-0 in competitive hockey action Sunday night.

The Math machine blew Arts out of Moses Springer Arena with a 6 goal in 8 minutes barrage during the first period and coasted to their third triumph this term. Fallon opened the scoring with an assist from Chupa at the seven minute mark and Rod Tanaka added the second goal a minute later. Then in a short space of time, Fallon fired his second goal and assisted on goals by Chupa and John Wetmore to boost the margin to 5-0. Before the first period ended, Chupa combined with Wetmore and Ian McElroy for a 6-0 lead.

The second scambly stanza saw Reg. Math pot two more markers as Ted Smandych converted a Brian Greatrix rebound and then Chupa completed his hat-trick with 7 seconds remaining in the game.

SHARE FIRST PLACE

Reg. Math now shares 1st place with surprising Science (each 3-0) and hosts "Street Urchins" this Sunday at 10:00 p.m.. They played the Arts contest without the services of Rob Madeley, Randy Husselman and Bert Hesselink, the latter out with an elbow injury and lost Ian McElroy for two weeks with a shoulder injury. The others are expected back for this week's game.

CO-OP MATH DEFENSE KEY IN B-BALL ROMP

Co-Op Math put on a tremendous display of team defense on Monday night as they annihilated Science 48-14 in League VI competitive basketball play.

The win was their second in succession and moved Co-Op Math into play off contention with a 2-1 record. It was the second time this season that Co-Op Math's opponents have scored less than 15 pts..

FUTURE GAMES

Hockey: SUN FEB 11 10:00 p.m. REG MATH vs STREET URCHINS MOSES SPRINGER
TUES. FEB 13 10:00 p.m. MATH I vs KIN & REC at QUEENSMOUNT

Basketball: SUN FEB 11 7:30 p.m. MATH I vs REG MATH P.A.C.
MON FEB 12 9:30 p.m. MATH I vs JOCKS P.A.C.
MON FEB 12 7:30 p.m. REG MATH vs OPT Ind.
MON FEB 12 8:30 p.m. CO-OP MATH vs BIGRECKS

UPCOMING EVENTS - SKI DAY TO-DAY!

To-day Thursday Feb 8 is intramural Ski Day at Chicopee in Kitchener. There are races for both inexperienced and show-offs, men and women from 1:00 p.m. - 5:00 p.m. so hurry. Buses leave Campus Centre 12:00 noon and 12:45 p.m. and cost only 25¢. Ski Day cost is \$1.00.

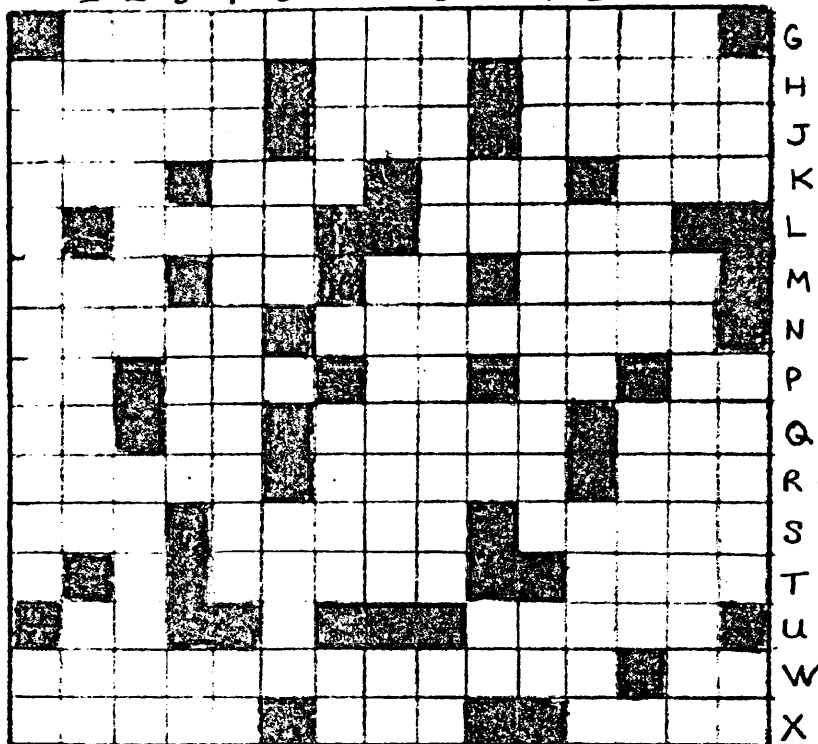
5 PIN MIXED BOWLING - SAT FEB 10

Waterloo Lanes 12.30 p.m. - 4/team, 2 male-2 female. 5 game tournament.

MEN'S CURLING - SUN FEB 11 - GLENBRIAR

MIXED DOUBLES BADMINTON - WED FEB 14 - entries close Tue Feb 13.

0 1 2 3 4 5 6 7 8 9 A B C D E



ACROSS

- g1 angular functions
- h0 feminine name
- h6 ___'s Coming
- ha proceed into
- j0 a fruit, or person leave?
- j6 drop one when, girl's name abbreviated
- ja blood sucker
- k0 nautical response
- k4 past tense of a choir
- k8 island
- kc South American city
- L0 what a stripper sometimes leaves on
- L2 sci-fi space adventures do this to my mind
- L8 dries coconut, sounds like snaky wire
- m0 part of a ripe apple
- n4 shorten asynchronous processing
- n7 repeated twice is a child's toy
- na right - past tense
- n0 overheard at a party: "We've got lots of chips, but ___ ___!"
- n6 melodious artist
- n0 foreshortened Egypt
- n3 feminine subject
- n7 part of song title (5th Dimension)
- na abbr for a bridge and road construction professional
- q0 neapolis (abbr)
- q3 nation and slang for breast have it in common
- qc may have been instrument of greek pan

GRIDWORD

- qc numeric food consumption
- r0 International Union of North American Carpenters????
- r6 Europe car, or position of rest
- rc the dog did it to the mail computer
- s0 the last part of a common flower
- s4 the same flower cant get up
- sa abbr for a univ where students don't have to do anything
- t4 below employ'
- tb male elevator operator
- ul integrated technology makes this word smaller
- u9 musically mixed up stone
- v0 multi-flavoured cold treat (3 words)
- wd word for another eye
- x0 ___noto
- x6 red garter runners
- xb relaxful remainder

DOWN

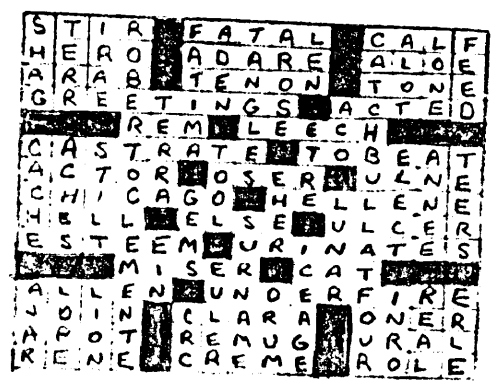
- g1 if T-REX served the sun god they might be called this
- g2 done to a driver's license every 3 years
- g3 a singing part
- g4 adjective descriptive of the study of the world's surface features
- g5 first word of anthem
- g6 Sir Isaac's last's first 4 letters, or a reptile
- g7 Spanish exclamation
- g8 one for computer rats: a little more than a chip
- g9 fifth of twenty-six
- ga remote computer method
- gb abbr for another way of saying that royalty goes on a sea excursion
- gc repeat mathematical procedure until condition satisfied
- gd this is French
- h0 don't you wish this Xword puzzle was in your mind???
- he element of Greek alphabet
- k5 provincial peace keepers
- k9 goes with behold
- Lb annual tournament named after this
- m1 leaky substance
- n7 victor's cry to opponent: "___ ___!"
- nd big word meaning dirty thoughts (not THAT big)

- n3 German? or some kind of travel agent's organization
- ne carried around for 9 months or so
- q6 fast or slow, water will still
- q9 french: familiar pronoun
- qc die down
- r2 commercial instant drink
- s5 search the countryside
- sb more so than Tonto's Panter
- u1 integrated circuit unit
- u3 preposition to a city?
- ua abbr of a provincial abbr
- v0 measure of intellectual capacity
- v3 a science many math students follow (abbr)
- v6 first pair of vowels
- w7 opposite of missed her
- w8 the end of stats
- ve french conjunctive

E. Morrison
 K. Wallace
 S. Waller

For the first genius with a solution to this week's GRIDWORD, there's a T-Shirt in the Mathsoc office. Your choice of colour.

SOLUTION
 TO
 LAST
 WEEK'S
 GRIDWORD



Thanks to Norm Macdonald for supplying us with last week's GRIDWORD.

Math's Senate Rep

Raps On...

Tuesday, of this week, the Board of Governors met. If the preliminary indications are

correct, student effectiveness regarding policies and actions of the university will be in a direct relation to the amount of preplanning that is done.

In a recent article, I criticized the Federation's approach regarding budget proposals. I would like to note at this time that some students (members of the Board) who had supported the package proposal now were of the view to delete parts of the proposal. The result was again confusion on the Board's part as to what to do. It is my opinion that such proposals need to be formed and circulated in a clear and concise way prior to the discussion in order that they be reasonably and clearly discussed.

COINCIDENCE

The other interesting item was that of the Village Budget. There had been proposed a \$40 per term increase next year in the village I and II residence fees because of increased costs. In the past week the village II council, in partial co-operation with students on the Board, prepared a detailed financial argument that an originally proposed \$25 per term increase be adopted to cushion the financial effect on the students. Meetings of the village II council president and vice-president with Dr. Matthews and Mr. Gellatly last week indicated no change in attitude. However, Monday morning of this week, the above two "reviewed" the "latest" information available and concluded that a \$30 raise per term would be better. Mr. Gellatly in his presentation to the Board, indicated that the review and the Village II Council proposals were merely COINCIDENCE. Personally, I feel that the village proposal would have been successfully adopted had the change not occurred. So I question the coincidence of the matter. But what is more important, is the well-prepared and well-researched job that the Village II Council did. This, in my opinion, is the best way for students to effectively voice their proposals.

Bruce McKay

FEEDBACK

LETTERS: Address your feedback to:
mathNEWS, c/o mathsoc office, #3038.
Or, drop letters in at the
mathsoc office, anytime.

The following is a rebuttal for a
past article "Don't Support
OPIRG".

The article dwelt mainly on
condemning the method of
financing proposed by OPIRG, the
so-called "involuntary voluntary"
fee.

BLACK MAGIC?

Granted, any money received by
OPIRG will hopefully be obtained
from the students of this
university on a prepaid refundable
basis. However, black magic is not
being used to force the Board of
Governors into granting that
privilege.

The organizers of OPIRG are
approaching the student body for
their permission first, by having
them petition the Board of
Governors into allowing the
voluntary fee. Without support
from the student body the Board
will not permit the fee but may be
convinced if the students want it.

SAFEGUARD INCLUDED

Suppose the students change their
minds after the fee has been
instituted? There will be a
safeguard: any term when 50% of
the fees have been refunded will
mark the end of the voluntary fee,
and OPIRG, since this will be an
indication that the student body
no longer feels that OPIRG is
desirable.

OTHER GROUPS HAVE PRIVILEGE

"Were the Board of Governors to
grant this collection of money by
OPIRG, how could they deny other
groups the same privilege after
setting such a precedent?" The
answer is now apparent. If such
groups can obtain similar support
from the campus, with a similar
safeguard, then they too may well
be granted that privilege.

Math Society and other similar
societies on campus obtain their
monies via "voluntary"
refundable fees. If one is to
condemn OPIRG's proposal, why not
condemn all these societies as
well?

The fact is, they need this
manner of funding because it works
better than any other. It is
efficient, less time consuming and
probably inexpensive when compared
to the cost of drumming up
publicity to have people make
term-by-term "donations." Many
would simply "not get around" to
paying a fee though they may agree
with the society's raison d'etre.
On the other hand, those who feel
strongly against the organization
or simply can't afford the few
bucks will make a point of
obtaining a refund.

The Ontario Public Interest
Research Group is perceived as
dealing with such matters as
environmental protection,
consumer protection, corporate and
government responsibility, and
human rights. To encompass such a
wide range requires professional,
expertise- it's also a full-time
job.

Students themselves do not have
the professional experience
required- even if they had it,
there would be problems of continuity
in the workings of the
organization due to such things as
exams and summer break. Hence, the
need for full-time professionals.
A director would be hired to
coordinate OPIRG's activities and
ensure that the programmes set
forth by the students are carried
out.

MINIMAL SALARIES ONLY

Salaries for the director and the
professional people will be
minimal but receipt of the money
must be assured. The refundable
voluntary fee will be forthcoming
as long as OPIRG exists- this is
likely to attract better people
and encourage them to do a better
job.

You asked why students should be
responsible for OPIRG, and not
the community at large.
Economically and philosophically
an organization such as OPIRG is
ideally patterned for the student
community. (continued on next page)

(continued from previous page)

CLASSIFIED

Unavoidably students are in a class by themselves. They are readily accessible and therefore much easier to organize than the community at large. Within bounds, their thinking is at a more consistent plane-they are more idealistic and more willing to do something beneficial about the ills and inequities in our society. But how?

Can a student single-handedly fight monopolistic industries or convince a reluctant government to prosecute an influential polluter? It requires time, research, lobbyists, lawyers, scientists and money. OPIRG could provide these if it lives, and give each student a chance to fulfill his ideals - they'd be a part of a vast vehicle for change, change with the public's interest in mind.

If 150,000 students in Ontario each paid three dollars, the resulting \$450,000 would provide healthy leverage for helping our society each year. OPIRG would then be free from accusations of favouritism towards (and manipulation by) government, industry, or business, for its funds will be received from none of these.

darrin johns

EDITORS:

We would like to take this opportunity to commend your actions in publishing our inspirational novel "The Water Melon Caully Flower Dough" as a public service to the entire Faculty of Mathematics--indeed all Mankind. Your typographical and design/arrangement work was flawless.

However, we hesitate to mention that unfortunately someone has neglected to place an umlaut above the ü in our last name. We trust that this minor will be rectified.

Respectively yours,

Gerhardt van Schplümfntk

-ADS ARE ***FREE*** . Send them free via campus mail to: mathNEWS, c/o mathsoc office , anytime.

-FOR RENT: 2 bedroom apartment available this summer, new and clean, 15 min. walk to campus. Call: 579-2794.

-TO SUBLET: 2 bedroom apartment available this summer, new and clean, 15 min. walk to campus. Call: 579-2794.

-FOR SALE: Scuba equipment, full wet suit (med.-large), safety vest, pressure gauge. Phone: 884-2808.

-FOR SALE: Complete set of APPA Baseball cards, 1962-71 seasons. See Jim in Circle-K office #A03040.

+ + + + +
-WANTED: Part time typists, willing to learn Honeywell edit system, good working conditions, 12 hr. week, night shift only, minimal pay. Contact mathNEWS via mathsoc office.

+ + + + +
-WANTED: 1 male, 5'11", 155 lb., 21 yrs., slim, muscular build, and attractive girl , 5'7", 123 lb., 37-24-36, 20 yrs., desire someone to complete a threesome. Bi-girl preferred. Films, games, S and M, no B & D , discretion and privacy expected and assured. Send photo, Box 610, U of W.

-CONGRATULATIONS: to Ellen K. and her finger!!! BM, JM, CH, WP, DD, DE, AL, LT, LK, MB, DH, CK, AP, MK, RF, and anybody else.

-FAMOUS quotations sent telenathically. Send 10¢, choice of author, SA-214, Village 2.

-To Stevie
From Brook.....
IT'S USELESS TO RESIST!

-HAPPY BIRTHDAY CLAIRE, LOTS OF LOVE, FROM YOUR SISTERS AND MATH FRIENDS.

-HAPPY birthday Chris from everyone.

GAUSS LIVES!

the phantom reports...

Any of you moderately informed mathies (or other things) out there who go into the Honeywell's terminal room thinking you know what to expect are probably in for a surprize!! The new, improved log-on subsystem is making a COMEBACK!! So to keep from blowing everybody's mind they list all the current events as soon as you log-on (about three quarters of the way through it, they tell you what you can do with it!) the first note is currently a reflection on the existence of this innovation (of which you by that time are aware), the second is comment that anything identified as JUNK will be thrown in the trash can. How long do we have it this time boys?

Whoever decides when and where to move terminals around has been very busy this week and the overcrowding problems in APL have been somewhat alleviated. These entirely unrelated incidents came about partly due to the fact that all the assignments due last week were due last week. In an attempt to maintain equilibrium, the mad-terminal-snatchers have snatched terminals from the APL-room (if you notice the two new terminals in the APL room you will also note that they are as yet unconnected, though one actually has the right typeball) AND the down-stairs terminal-room (not that anyone will miss any of those junk-factory rejects).

It is also notable that response time has never recovered from last week's setback (why can't they run APL on some machine that can handle it? I suppose they have their reasons).

New Logon Revisited

That someone who was so good at keeping his identity restricted info finally got his LOGON procedure working! Now you really can change your password and still sign back on later with your new one. However, you must also suffer through all the new notices about room reservations, software changes, etc.. Rumor has it that there are some really fast terminals going into M&C 3167 and 3168. These can be run at 1200 or 2400 bits/second which means they are 10-20 times faster than the 2741's (and cost only 1/3 as much!).

Rick Beach (who has identified himself) has lots of system software projects, big and small, which any interested student can enquire about- he'll trade you your own account number for some good software. See Peter Fraser in M&C 3017 or Rick in M&C 5190.

AMBIGUOUS

Be wary of self-evaluated grades. Of concern to mathies the Math Faculty Council has approved of the following motion.

"That no self-evaluated grades be accepted by the Standing and Promotions Committee as credit toward B-MATH degree, where "self-evaluated" implies that the grade is assigned in whole or in part by the candidate."

The whole idea of self-evaluated grades is not completely resolved. The actual definition of "self-evaluated" is under considerable discussion. The best action to take when pre-registering next fall is to make sure Math will recognize all the courses you wish to take.

mathNEWS -financed by but independent of Mathsoc
we've received so many articles that we hardly have room for the masthead.... if YOU want to write an article or hear of something you think we should cover, just drop us a line at mathsoc.... and to the pink tie freak who's been hitting campus: why don't you use flourescent pink?... once again the people to blame for this issue are john neebles, george betowski, lynn solvason, dennis mullin, randall mcdougall, hans rempel and steve treadwell....
why don't YOU drop in and volunteer sometime???